

## SHORT PROFILE OF THE BENTELER GROUP



BENTELER is a global company engaged in the development, production and distribution of products, systems and services for the automotive, energy and mechanical engineering sectors. We have a skilled workforce of approximately 23,000 employees at 86 locations in 26 countries worldwide, dedicated to delivering a first-class service in production and distribution wherever our customers need us. We use our size and global reach to serve the market flexibly, in cooperation with our business partners.

The BENTELER Group is managed by BENTELER International AG, registered in Salzburg, Austria. With technological excellence and effective implementation we develop solutions that make a difference – for our customers, our employees and society.

**BENTELER. The family of driven professionals. Since 1876.**

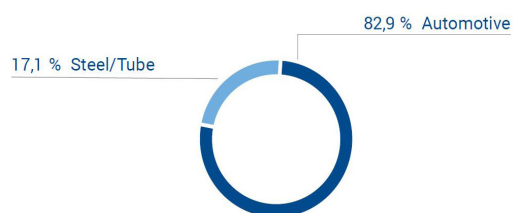
## KEY FIGURES 2023

FINANCIAL YEAR JANUARY 1 – DECEMBER 31

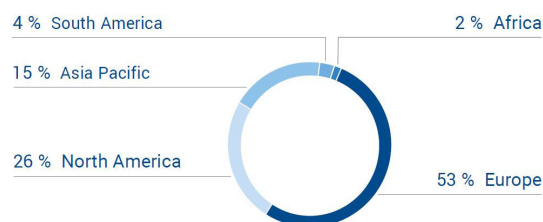
	2023
External revenue BENTELER Group	€ 8,787 million
EBITDA	€ 782 million
EBIT	€ 517 million
Free cashflow	€ 509 million
Cash and cash equivalents	€ 642 million
Working capital	€ 120 million
Investments	€ 360 million
R&D budget	€ 65 million
Locations	86
Countries	26
Employees incl. trainees <sup>1</sup>	20,990
Trainees <sup>1</sup>	475

<sup>1</sup> annual average; measured in full-time equivalents; excluding contract workers (Headcount ~23.000)

## REVENUE BY SEGMENT



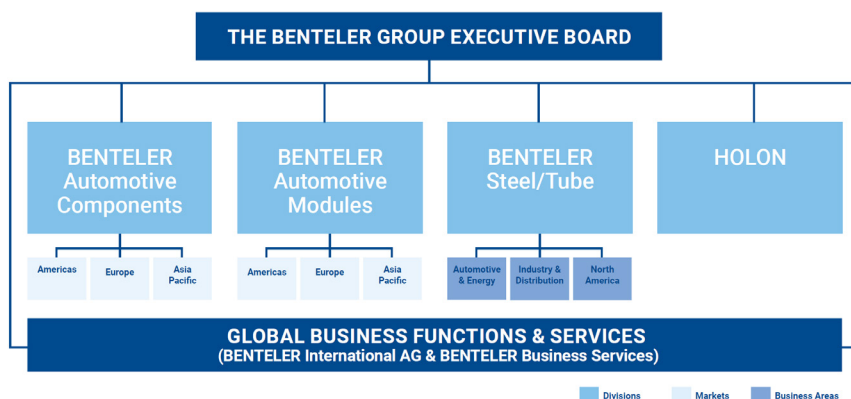
## REVENUE BY REGION



## GROUP STRUCTURE

By evolving our organizational design in a targeted way, we are creating the conditions for even more effective and independent development of our business divisions. To this end, we are creating four strong divisions: BENTELER Automotive Components, BENTELER Automotive Modules, BENTELER Steel/Tube and HOLON.

### ENHANCED ORGANIZATIONAL DESIGN OF THE BENTELER GROUP



## BENTELER INTERNATIONAL AG

The Executive Board of the holding company is responsible for the strategic management of the Group. The Board members are:

- **Ralf Göttel, Chief Executive Officer**
- **Dr. Tobias Braun, Chief Financial Officer**

## BENTELER AUTOMOTIVE

The Automotive business is organized into the two divisions BENTELER Automotive Components and BENTELER Automotive Modules. As development partner for the world's leading automobile manufacturers, we work with around 20,000 employees in more than 20 countries to develop tailored solutions for our customers. Our products include components and modules in the areas of chassis, body, engine and exhaust systems, as well as future technologies such as battery storage systems for electric vehicles.

## HOLON

HOLON is a subsidiary of the BENTELER Group. With well-founded know-how in automotive technology and industrialization as well as the continuous implementation of new technologies for electromobility, the company develops autonomous movers for the vehicle market of the future. To do this, HOLON works with technology companies, local public transport companies and mobility-as-a-service providers.

## BENTELER STEEL/TUBE

BENTELER Steel/Tube develops and produces steel and seamless and welded quality steel tubes. As one of the leading manufacturers, we offer our customers worldwide solutions along the entire value chain - from material development to tube applications. We create customized tube products for the automotive, energy and industry market segments.

Launched in 2023, the CliMore® product family saves up to 85% of CO<sub>2</sub> emissions compared with conventional steel production by using green electricity and recycled materials instead of ore. This enables our customers to effectively reduce their upstream emissions from purchased materials and thus achieve their climate targets..

## OWNERSHIP STRUCTURE

BENTELER is a family business now owned by the fifth generation of the founding family. Founded in 1876 by Carl Benteler, today 50% of the company shares of BENTELER International AG are held by Dr. Ing. E.h. Helmut Benteler GmbH, while 50% are held by CAB Holding GmbH and CAB II GmbH.

## RALF GÖTTEL, CEO OF THE BENTELER GROUP

Ralf Göttel (born 1966) has been Chief Executive Officer (CEO) of the BENTELER Group since April 2017. He is responsible for Strategy and Mergers & Acquisitions; Human Resources, IT; Group Compliance & Board Affairs, as well as Communications & Marketing.

Ralf Göttel graduated from RWTH Aachen with a degree in engineering. His career began in 1991 when he started as a development engineer at a major automobile manufacturer. Since 2010, he has held various management positions with the BENTELER Group. From 2014 to 2017, he was Chairman of the Management Board of BENTELER Automobiltechnik GmbH, which he has again headed as CEO since August 2018 in addition to his role as Chairman of the Group's Executive Board.

## CONTACT

Stephan Knüttel  
Vice President Corporate Communications/Marketing  
stephan.knuettel@benteler.com  
Phone: +49 5254 81307610  
Mobile: +49 172 5727257

[www.benteler.com](http://www.benteler.com)

## BENTELER AT A GLANCE

BENTELER develops solutions that make the difference – for our customers, employees and society. We are passionate about producing safety-relevant products, services and systems for the energy, automotive and engineering sectors that lead to success. And we do that in close proximity and collaboration with our customers. With our technological expertise and strong focus on successful implementation, we keep our promises. At BENTELER we give our all – with courage, ambition and respect – but we never give up. **BENTELER. The family of driven professionals. Since 1876.**

**BENTELER**  
makes it happen